

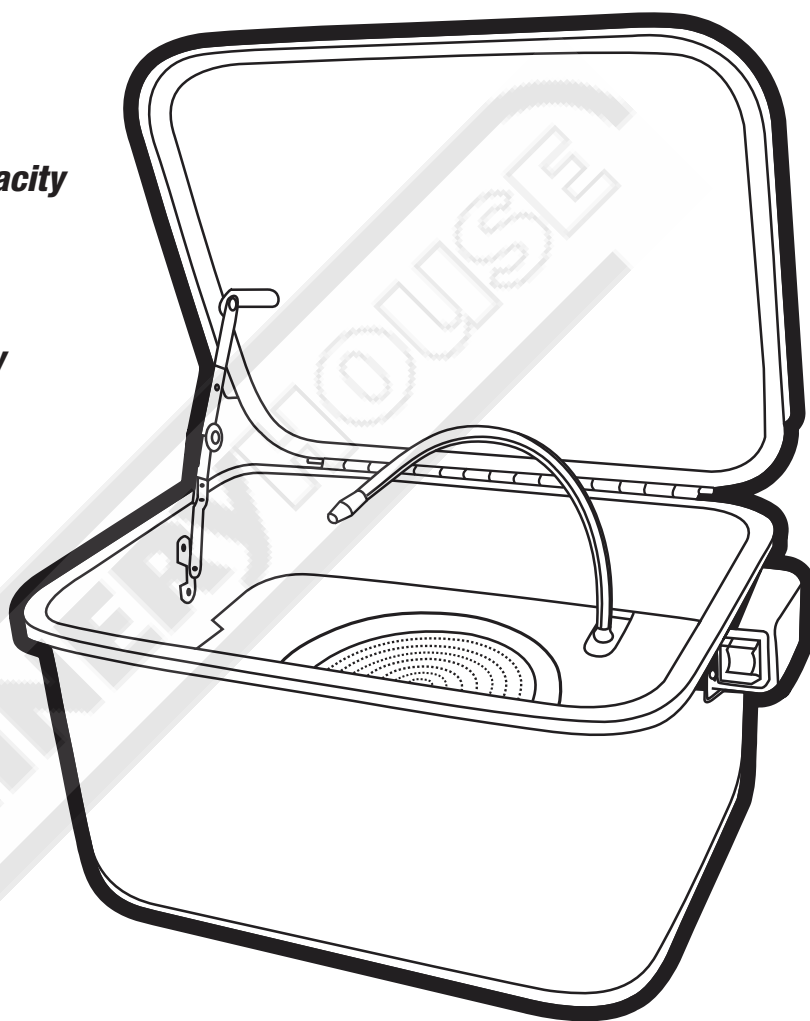
HAFCO METALMASTER



12 Litre Solvent Capacity



22 Litre Tank Capacity



Edition : 1.0
Date: (06/24)

Instruction Manual

AUTO PARTS WASHER APW-22

Order Code: (A370)

TABLE OF CONTENTS

TABLE OF CONTENTS.....	2
PRODUCT SPECIFICATION.....	3
SAFETY INFORMATION.....	3
INSTALLATION STEPS.....	4
OPERATION.....	5
MAINTENANCE.....	5
TROUBLESHOOTING FOR VACUUM STYLE.....	6
PARTS DIAGRAM.....	6

GUARANTEE

This product is guaranteed against faulty manufacture for a period of 12 months from the date of purchase. Please keep your receipt as proof of purchase. This guarantee is invalid if the product is found to have been abused or tampered with in any way, or not used for its intended purpose.

Faulty goods should be returned to their place of purchase, no product can be returned to us without prior permission.

This guarantee does not effect your statutory rights.

SAFETY PRECAUTIONS

WARNING

AS WITH ALL MACHINERY, THERE ARE CERTAIN HAZARDS INVOLVED WITH THEIR OPERATION AND USE. EXERCISING RESPECT AND CAUTION WILL CONSIDERABLY LESSEN THE RISK OF PERSONAL INJURY.

HOWEVER, IF NORMAL SAFETY PRECAUTIONS ARE OVERLOOKED OR IGNORED, PERSONAL INJURY TO THE OPERATOR OR DAMAGE TO PROPERTY, MAY RESULT.

1. ALWAYS Learn the machine's applications, limitations, and the specific potential hazards peculiar to it. Read and become familiar with the entire operating manual.
2. ALWAYS wear suitable protective clothing, gloves and goggles, manufactured to the latest European Safety Standards. Everyday eye glasses are not safety glasses.
3. ALWAYS clean off any accidental splashes of degreaser on the skin, seek medical attention immediately if necessary.
4. ALWAYS follow degreaser manufacturer's instructions carefully.
5. ALWAYS check for damage. Before using the washer, any damaged part, should be checked to ensure that it will operate properly, and perform its intended function. Any damage should be properly repaired or the part replaced. If in doubt, DO NOT use the machine. Consult your local dealer.
6. ALWAYS disconnect the washer from the power supply before carrying out any maintenance or cleaning of the parts washer.
7. ALWAYS keep work area clean. Cluttered areas and benches invite accidents, mop up accidental spillages of degreaser immediately.

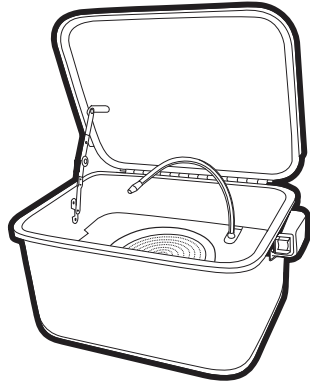
SAFETY PRECAUTIONS

8. ALWAYS ensure that adequate lighting is available. A minimum intensity of 300 lux should be provided. Ensure that lighting is placed so that you will not be working in your own shadow.
9. ALWAYS keep children away. All visitors should be kept a safe distance from the work area, especially whilst operating the machine.
10. ALWAYS maintain machine in top condition. Keep washer clean for the best and safest performance. Follow maintenance instructions.
11. ALWAYS ensure the switch is off before plugging in to mains. Avoid accidental starting.
12. ALWAYS concentrate on the job in hand, no matter how trivial it may seem. Be aware that accidents are caused by carelessness due to familiarity.
13. ALWAYS keep your proper footing and balance at all times don't over reach. For best footing, wear rubber soled footwear. keep floor clear.

INCLUDES

- 1 x 22 Litre capacity tub (12 Litre actual operating capacity)**
- 1 x Parts tray**
- 1 x Flexible, positionable metal "Gooseneck" fluid outlet tube with nozzle**

SPECIFICATIONS

Item Name	
• Voltage: 240V/50Hz	
• Maximum pump capacity @ outlet: 2.7-3.3L/MIN	
• Tank Capacity: 22 Litre	
• Solvent Capacity: 12 Litre	

ASSEMBLY

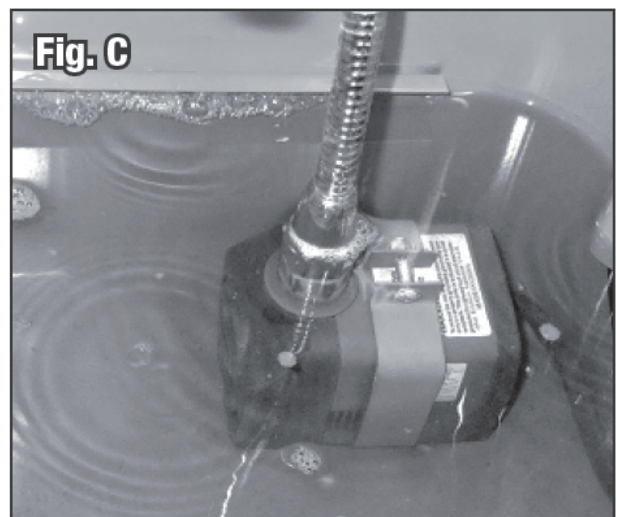
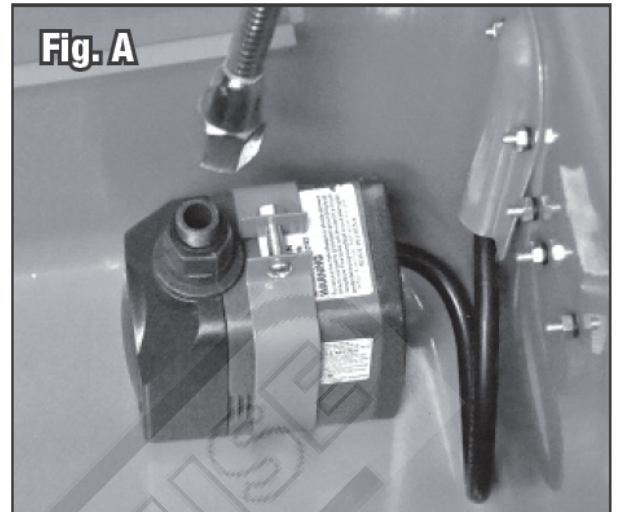
- Thread the Flexible Metal “Gooseneck” Fluid Outlet Tube onto the Pump Outlet Fitting (Fig A).
- Place the Parts Cleaning Tray over the ledges on the walls of the tub. Make sure the Nozzle of the Flexible Metal “Gooseneck” Fluid Outlet Tube is shaped to be facing in and downward toward the center of the Tub (Fig B).
- Fill unit with suitable, water-based degreasing solution sufficiently to cover the entire Pump (approx. 3.5 gallons) (Fig C).

Important Notes:

- Follow degreasing solution mixing, usage and safety label instructions carefully before using.
- Be sure the cleaning solution level fully covers the Pump or it will not function properly.
- Plug power cord into an approved, grounded and equipped AC 240V/50Hz
- Turn Power Switch to the “On” position. The Parts Washer is now ready for use.

OPERATION

- Place parts to be cleaned on the Parts Tray.
- Allow cleaning solution to flow completely over the part surface, wetting it completely. Allow time for solution to soften any grease and debris then use a suitable parts cleaning brush to remove stubborn deposits.
- Let excess solution drain from parts then remove from washer and rinse in warm water.
- When done, turn pump to the off position, close lid and unplug unit.



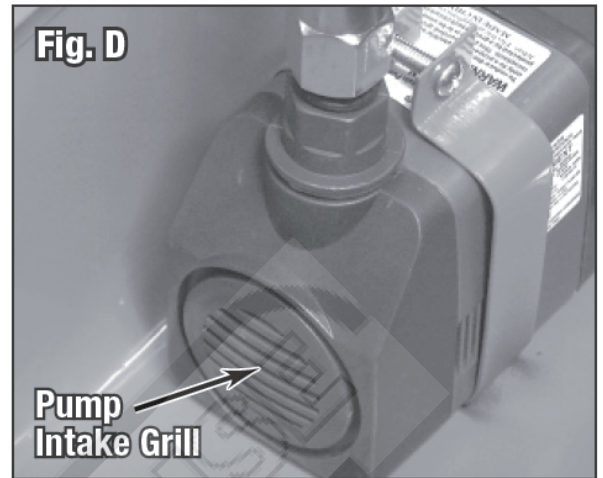
MAINTENANCE

• Unplug unit and inspect the pump intake grill after every hour of cleaning (Fig D). Clean more often if removing excessively heavy deposits of grease and grit.

Important Note:

Failure to clean pump intake will result in diminished fluid flow, cleaning effectiveness and eventual pump motor failure.

- If it becomes apparent that the pump intake grill requires cleaning more often, it is likely that the cleaning solution needs to be replaced and an accumulation of sediment from the Tub bottom needs to be removed.
- Drain and pour drain cleaning solution into suitable containers and dispose of properly.



TROUBLESHOOTING

- If Fluid stops flowing or flows sporadically, the Pump may not be fully submersed. The Pump must be fully under the fluid surface level to work properly (Fig C).
- If pump intake cleaning does not restore pump performance, an accumulation of dirt and grit may be present in the Flexible Metal “Gooseneck” Fluid Outlet Tube.
- Unplug unit and remove Flexible Metal “Gooseneck” Fluid Outlet Tube and check for obstructions lodged in tube and remove.

APPROVED CLEANING SOLUTIONS

- ✓ WATER
- ✓ WATER / HOUSEHOLD DETURGENTS (PH6-B)
- ✓ KEROSENE
- ✓ DIESEL FUEL

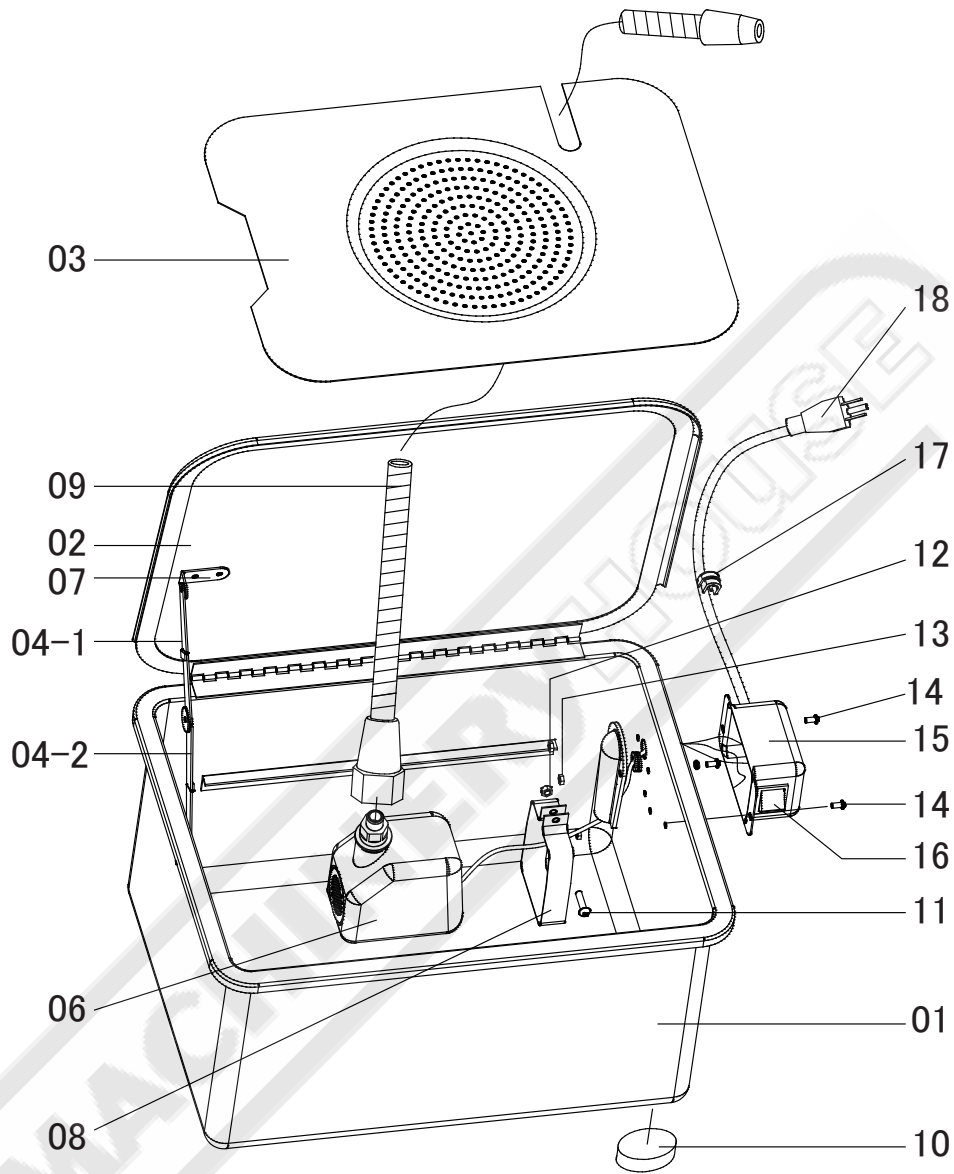


“DO NOT USE - PETROL”

NOTE: DO NOT OVERFILL - Maximum liquid level is the tray level.

THE PUMP WILL BE DAMAGED IF SOLUTIONS OTHER THAN THE ABOVE ARE USED AND WARRANTY WILL BE VOID

PARTS DIAGRAM



PARTS LIST

N.O.	DESCRIPTION	N.O.	DESCRIPTION
1	Tank	10	Plastic Foot
2	Lid	11	M5x30 Screw
3	Work Shelf	12	M5 Nut
4-1	Upper Fusible Link	13	Cover
4-2	Lower Fusible Link	14	M4x12 Screw
6	Pump	15	Switch Box
7	Rivet	16	Switch
8	Pump Holder	17	Strain Relief
9	Flexible Metal Spigot	18	Power cord

WARNING

General Machinery Safety Instructions

Machinery House
requires you to read this entire Manual before using this machine.

- 1. Read the entire Manual before starting machinery.** Machinery may cause serious injury if not correctly used.
- 2. Always use correct hearing protection when operating machinery.** Machinery noise may cause permanent hearing damage.
- 3. Machinery must never be used when tired, or under the influence of drugs or alcohol.** When running machinery you must be alert at all times.
- 4. Wear correct Clothing.** At all times remove all loose clothing, necklaces, rings, jewelry, etc. Long hair must be contained in a hair net. Non-slip protective footwear must be worn.
- 5. Always wear correct respirators around fumes or dust when operating machinery.** Machinery fumes & dust can cause serious respiratory illness. Dust extractors must be used where applicable.
- 6. Always wear correct safety glasses.** When machining you must use the correct eye protection to prevent injuring your eyes.
- 7. Keep work clean and make sure you have good lighting.** Cluttered and dark shadows may cause accidents.
- 8. Personnel must be properly trained or well supervised when operating machinery.** Make sure you have clear and safe understanding of the machine you are operating.
- 9. Keep children and visitors away.** Make sure children and visitors are at a safe distance for you work area.
- 10. Keep your workshop childproof.** Use padlocks, Turn off master power switches and remove start switch keys.
- 11. Never leave machine unattended.** Turn power off and wait till machine has come to a complete stop before leaving the machine unattended.
- 12. Make a safe working environment.** Do not use machine in a damp, wet area, or where flammable or noxious fumes may exist.
- 13. Disconnect main power before service machine.** Make sure power switch is in the off position before re-connecting.
- 14. Use correct amperage extension cords.** Undersized extension cords overheat and lose power. Replace extension cords if they become damaged.
- 15. Keep machine well maintained.** Keep blades sharp and clean for best and safest performance. Follow instructions when lubricating and changing accessories.
- 16. Keep machine well guarded.** Make sure guards on machine are in place and are all working correctly.
- 17. Do not overreach.** Keep proper footing and balance at all times.
- 18. Secure workpiece.** Use clamps or a vice to hold the workpiece where practical. Keeping the workpiece secure will free up your hand to operate the machine and will protect hand from injury.
- 19. Check machine over before operating.** Check machine for damaged parts, loose bolts, Keys and wrenches left on machine and any other conditions that may effect the machines operation. Repair and replace damaged parts.
- 20. Use recommended accessories.** Refer to instruction manual or ask correct service officer when using accessories. The use of improper accessories may cause the risk of injury.
- 21. Do not force machinery.** Work at the speed and capacity at which the machine or accessory was designed.
- 22. Use correct lifting practice.** Always use the correct lifting methods when using machinery. Incorrect lifting methods can cause serious injury.
- 23. Lock mobile bases.** Make sure any mobile bases are locked before using machine.
- 24. Allergic reactions.** Certain metal shavings and cutting fluids may cause an allergic reaction in people and animals, especially when cutting as the fumes can be inhaled. Make sure you know what type of metal and cutting fluid you will be exposed to and how to avoid contamination.
- 25. Call for help.** If at any time you experience difficulties, stop the machine and call you nearest branch service department for help.

WARNING

Parts Washer Safety Instructions

Machinery House
requires you to read this entire Manual before using this machine.

- 1. Maintenance.** Make sure the Parts Washer is turned off and disconnect from the main power supply before any inspection, adjustment or maintenance is carried out. The Parts Washers tub and filters should be cleaned on a regular basis to keep the pump free from being blocked. Replace nozzles, hoses & pump when become worn. Check the cabinet for any leaks.
- 2. Leaving a Parts Washer Unattended.** Always turn the Parts Washer off before leaving the Parts Washer. Do not leave Parts Washer running unattended for any reason.
- 3. Protecting environment.** Keep Part Washer lid shut when not in use.
- 4. Understand the machines controls.** Make sure you understand the use and operation of all controls.
- 5. Power outage.** In the event of a power failure during use of the machine, turn off all switches to avoid possible sudden start up once power is restored.
- 6. Fire Hazard.** Do not use flammable solvents such as petrol. Refer to manual for appropriate solvents.
- 7. Eye protection.** Always wear safety glasses when using and cleaning this machine.
- 8. Hand protection.** It is recommended to wear correct safety gloves when using and cleaning this machine.
- 9. Fume hazard.** Parts Washer cleaning solvents can give off hazardous fumes, which may cause long term respiratory problems if inhaled. Always have good ventilation and use a breathing respirator if applicable.
- 10. Other Hazards.** Do not allow children anywhere near this machine. Serious injury can occur.
- 11. Call for help.** If at any time you experience difficulties, stop the machine and call you nearest branch service department for help.

PLANT SAFETY PROGRAM

NEW MACHINERY HAZARD IDENTIFICATION, ASSESSMENT & CONTROL

Parts Washer

Developed in Co-operation Between A.W.I.S.A and Australia Chamber of Manufactures
 This program is based upon the Safe Work Australia, Code of Practice - Managing Risks of Plant in the Workplace (WHSA 2011 No10)

Item No.	Hazard Identification	Hazard Assessment	Risk Control Strategies <small>(Recommended for Purchase / Buyer / User)</small>
H	ELECTRICAL	MEDIUM	All electrical enclosures should only be opened with a tool that is not to be kept with the machine. (Recommended for Purchase / Buyer / User)
M	HIGH TEMPERATURE or FIRE	MEDIUM	Keep electrical equipment away from parts washer. Ensure correct solvent is used. To reduce the risk of fire, do not operate parts washer in the vicinity of open flames
O	OTHER HAZARDS, CHEMICALS, FUMES.	LOW	Wear safety glasses. Wear protective gloves. Use parts washer in a well ventilated area.



Plant Safety Program to be read in conjunction with manufactures instructions



www.machineryhouse.com.au



www.machineryhouse.co.nz

Authorised and signed by:
 Safety officer: 
 Manager: 

Revised Date: 12th March 2012

The following section covers the spare parts diagrams and lists that were current at the time this manual was originally printed. Due to continuous improvements of the machine, changes may be made at anytime without notification.

HOW TO ORDER SPARE PARTS

1. Have your machines model number, serial number & date of manufacture on hand, these can be found on the specification plate mounted on the machine
2. A scanned copy of your parts list/diagram with required spare part/s identified.

NOTE: SOME PARTS MAY ONLY BE AVAILABLE AS AN ASSEMBLY

3. Go to www.machineryhouse.com.au/contactus and fill out the inquiry form attaching a copy of scanned parts list.



WARNING!

*Electricity is dangerous and could cause death
All electrical work must be carried out by a qualified electrician.*



CAUTION

It is impossible to cover all possible hazards Every workshop environment is different. These are designed as a guide to be used to compliment training and as a reminder to users prior to equipment use. Always consider safety first, as it applies to the individual working conditions.



ENVIRONMENT PROTECTION

Recycle unwanted materials instead of disposing of them as waste. All tools, accessories and packaging should be sorted, taken to a recycling centre and disposed of in a manner which is compatible with the environment. When the product becomes completely unserviceable and requires disposal, drain any fluids (if applicable) into approved containers and dispose of the product and fluids according to local regulations.

Imported by

HARE & FORBES
MACHINERYHOUSE

Australian Distributor

Hare & Forbes
Machineryhouse
Sydney - Melbourne
Adelaide - Brisbane - Perth

Ph: 1300 202 200
www.machineryhouse.com.au

MACHINERYHOUSE

New Zealand Distributor

Machineryhouse
Auckland
Christchurch

Ph: 0800 142 326
www.machineryhouse.co.nz